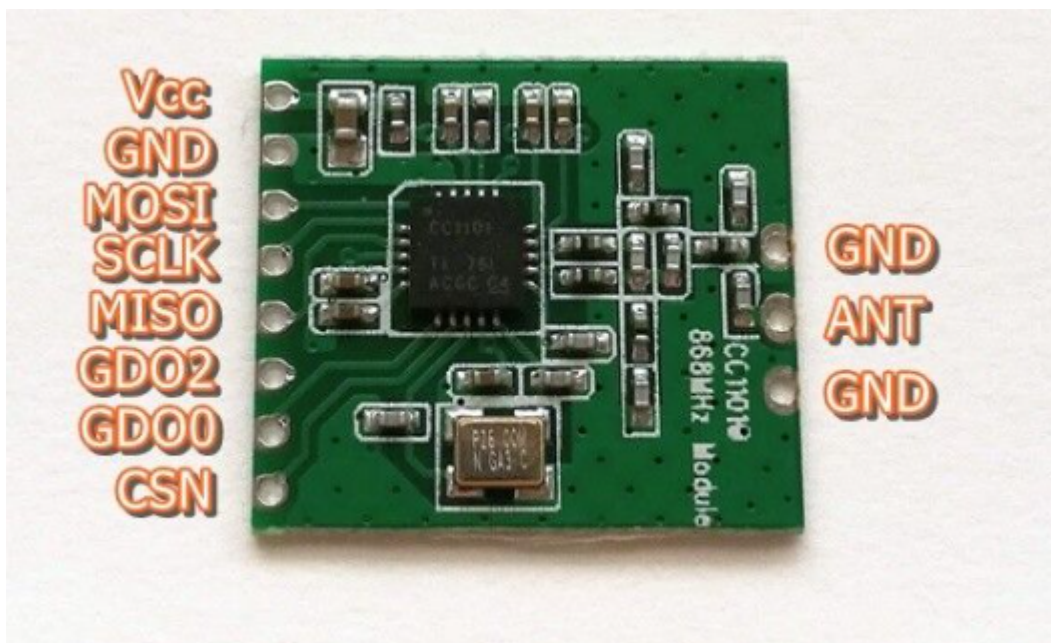


Wasserzähler

- <https://gnulinux.ch/integration-des-multical-303-in-home-assistant-via-wireless-m-bus>
- https://github.com/SzczepanLeon/esphome-components/tree/version_4
- <https://github.com/Bulion/esphome-components> → Klappt mit Version 5 ????

CC1101 Modul



Pin CC1101	Pin ESP32	Function
VCC		
GND		
MOSI		
SCLK		
MISO		
GDO2		
GDO0		
CSN		

From: <https://www.drklipper.de/> - Dr. Klipper Wiki

Permanent link: https://www.drklipper.de/doku.php?id=haussteuerung:esphome:wasser_wm-bus&rev=1765031278

Last update: 2025/12/06 15:27

