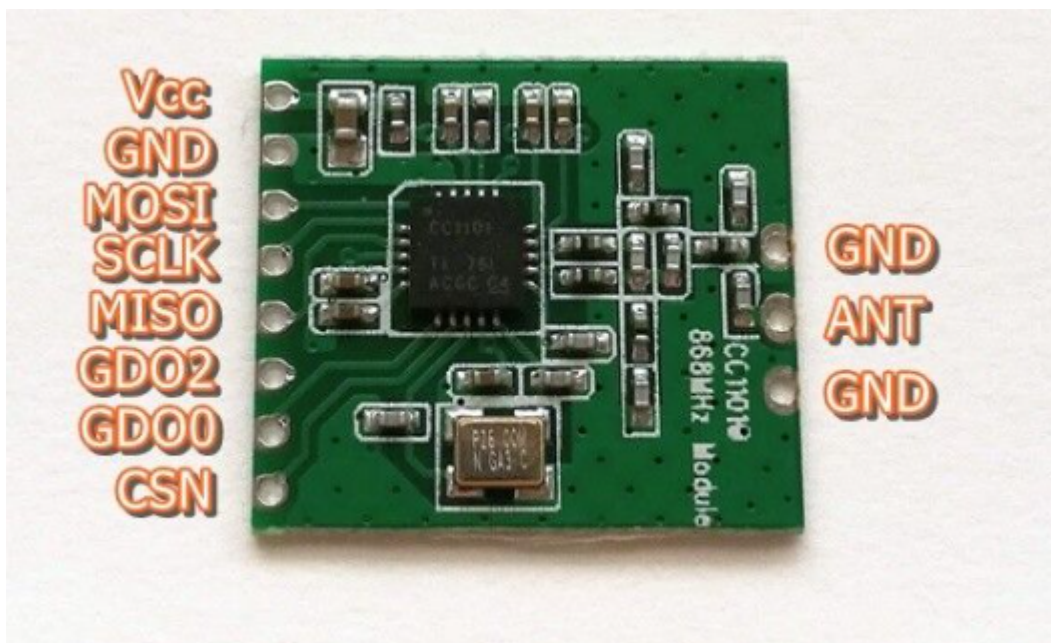


Wasserzähler

- <https://gnulinux.ch/integration-des-multical-303-in-home-assistant-via-wireless-m-bus>
- https://github.com/SzczepanLeon/esphome-components/tree/version_4
- <https://github.com/Bulion/esphome-components> → Klappt mit Version 5 ????

CC1101 Modul



Pin CC1101	Pin ESP32	Function
VCC	3.3V	Versorgung 3.3V
GND	GND	Masse
MOSI	GPIO25	SPI Mosi
SCLK	GPIO27	SPI Clock
MISO	GPIO32	SPI Miso
GDO2	GPIO17	
GDO0	GPIO21	
CSN	GPIO22	Chip Select

From: <https://www.drklipper.de/> - Dr. Klipper Wiki

Permanent link: https://www.drklipper.de/doku.php?id=haussteuerung:esphome:wasser_wm-bus&rev=1765031420

Last update: 2025/12/06 15:30

