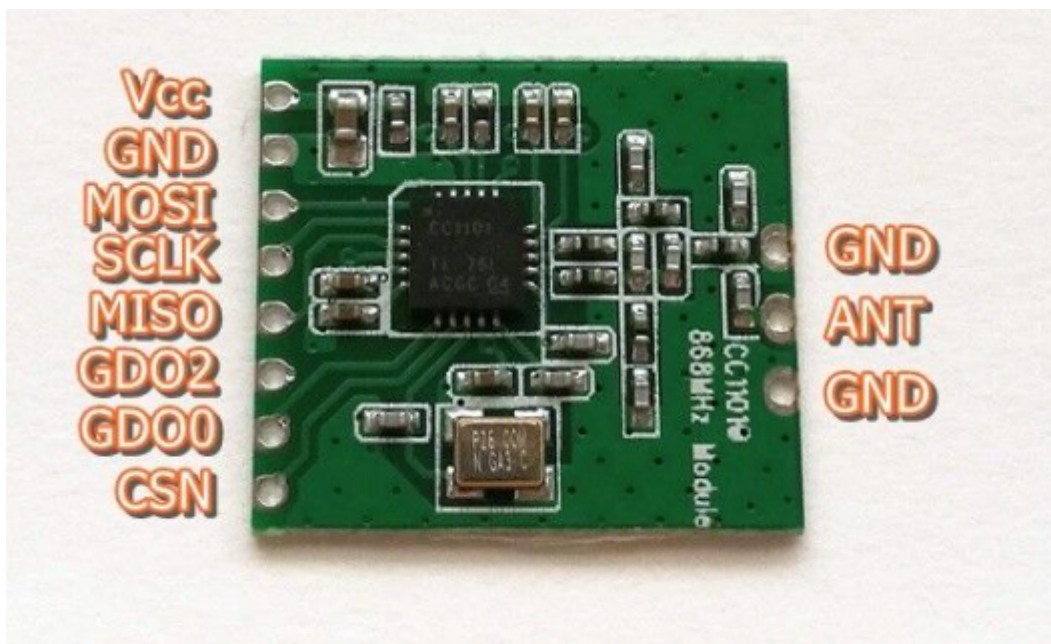


# Wasserzähler

- <https://gnulinux.ch/integration-des-multical-303-in-home-assistant-via-wireless-m-bus>
- [https://github.com/SzczepanLeon/esphome-components/tree/version\\_4](https://github.com/SzczepanLeon/esphome-components/tree/version_4)
- <https://github.com/Bulion/esphome-components> → Klappt mit Version 5 ????
- <https://github.com/Bulion/ESPHome-Components-iotlabs/tree/cc1101-interrupt> → genutzte Version aktuell
- <https://github.com/SzczepanLeon/esphome-components/issues/255>

## CC1101 Modul



Pin CC1101	Pin ESP32	Pin ESP32 S3	Function
VCC	3.3V	3.3V	Versorgung 3.3V
GND	GND	GND	Masse
MOSI	GPIO25	GPIO48	SPI Mosi
MISO	GPIO32	GPIO47	SPI Miso
SCLK	GPIO27	GPIO21	SPI Clock
GDO0	GPIO21	GPIO13	
GDO2	GPIO17	GPIO14	
CSN	GPIO22	GPIO12	Chip Select

From: <https://www.drklipper.de/> - Dr. Klipper Wiki

Permanent link: [https://www.drklipper.de/doku.php?id=haussteuerung:esphome:wasser\\_wm-bus&rev=1766212269](https://www.drklipper.de/doku.php?id=haussteuerung:esphome:wasser_wm-bus&rev=1766212269)

Last update: 2025/12/20 07:31

